



MALMESBURY CE PRIMARY SCHOOL

Vision 2025-30: Building for the Future

Contents



- Vision Statement
- Our Values... Some Things Never Change
- The Previous Vision: You said...we did...
- How Do We Achieve Our Vision Statement?
- The New Vision: 2025-30

The School's
Vision
Statement is...



“Growing together in
wisdom and love;
discovering life in all
its fullness.”

“Growing together in wisdom and love;
discovering life in all its fullness.”

Malmesbury is a remarkable place: Rich in history and on the cutting edge of technology. Picturesque, yet a thriving community. A place where people have always had big dreams.

But what are the opportunities for our school over the next five years?

These are exciting times at Malmesbury Primary School, and we are eager to share our plans with you.





Our values... some things never change

The School's Christian foundation and values are timeless. They underpin everything we do, teaching us what is good and enabling us to flourish.

They are:



LOVE – THE CENTRAL VALUE. LOVE FOR ONE ANOTHER, FOR OURSELVES, FOR GOD, FOR LIFE AND FOR LEARNING.



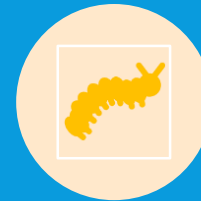
RESPECT – WE RESPECT OTHER PEOPLE'S VIEWS AND BELIEFS, OUR ENVIRONMENT AND OURSELVES.



KINDNESS – WE ARE KIND TO EVERYONE, EVERYTHING AND TO OURSELVES.



COURAGE – LIVING OUT OUR VALUES AND FACING LIFE'S CHALLENGES TAKES COURAGE. WE ARE COURAGEOUS.



CREATIVITY – SELF EXPRESSION AND CREATIVITY IN ALL ITS FORMS ARE FUNDAMENTAL TO HUMAN FLOURISHING.



INDEPENDENCE – WE AIM TO BECOME INDEPENDENT IN ALL OUR LEARNING AND ALL OUR VALUES.



The Previous Vision: You said...we did...

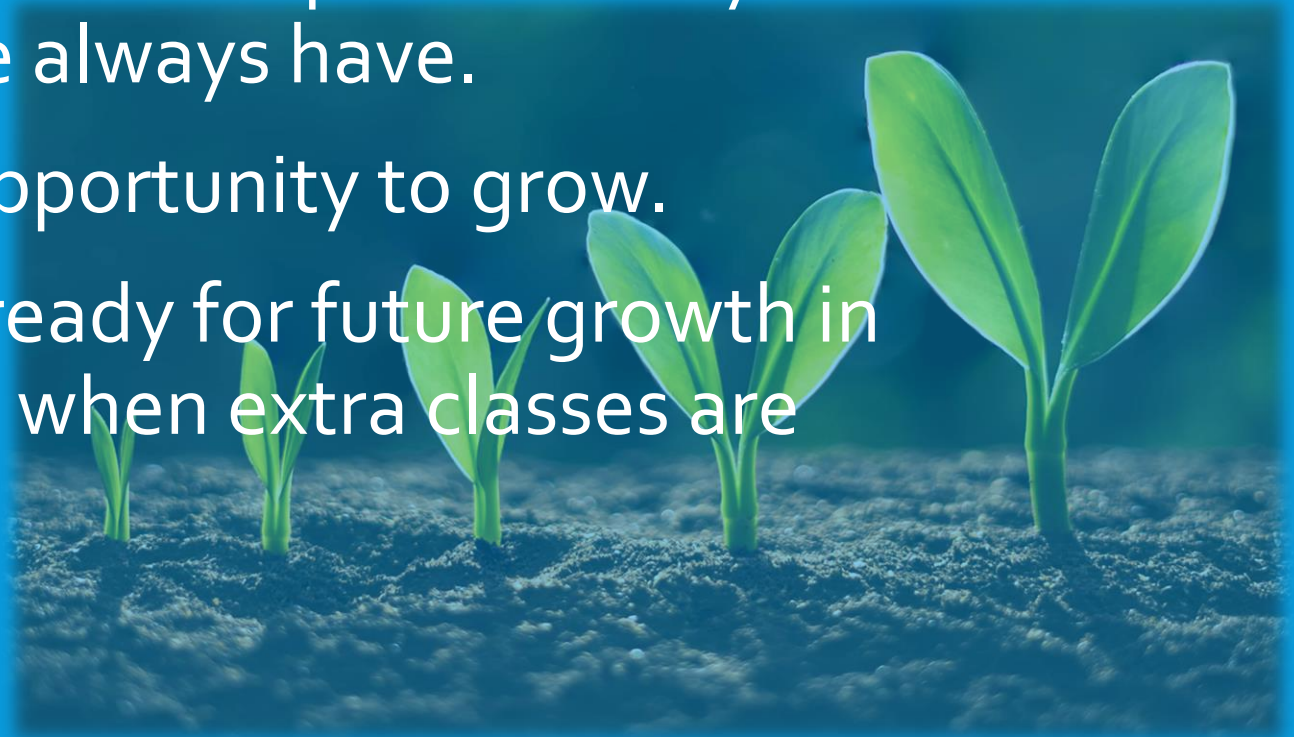
Our last vision cycle began in 2018, ran through the pandemic and led us to where we are today. In response to our previous vision consultation we:

- Established wrap-around childcare
- Built an all-weather MUGA (Multi Use Games Area)
- Enhanced outdoor learning
- Maintained and developed a broad, balanced, rich curriculum
- Developed STEAM learning... which led to bigger things!
- Retained our caring ethos and strong relationships, developing provision for mental health and Special Educational Needs.

How do we Achieve our Vision Statement? Growing...



- Our children are growing; our town is growing.
- We want to be able to offer school places to anyone who lives in Malmesbury, as we always have.
- Our school has a unique opportunity to grow.
- We can build now and be ready for future growth in pupil numbers, expanding when extra classes are needed.



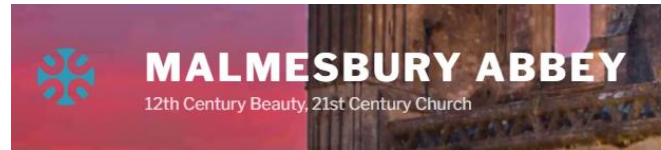
together...



MALMESBURY
TOWN COUNCIL



THE CHURCH
OF ENGLAND
EDUCATION OFFICE



Wiltshire Council
Where everybody matters



- Malmesbury Primary School is a Single Academy Trust. This frees us to shape our school *to* our community, in collaboration *with* our community.
- Our school was founded by the Church of England. The existing buildings are held in trust by the Church Wardens of Malmesbury Abbey.
- Sir James Dyson has given us an incredible £6 million in funding through his charitable foundation. A gift of this size to a primary school is unheard of.
- Wiltshire Council has made land next to the school available, in line with Malmesbury's Neighbourhood Plan, but it must be used by 2031 otherwise it will revert to housing developers.



in wisdom...

- We will continue to deliver excellence in all areas of the National Curriculum, enhancing it in every dimension to grow citizens of the future.
- The James Dyson Foundation will fund the conversion of two classrooms into laboratories for teaching Science, Technology, Engineering, the Arts and Maths (STEAM), with state-of-the-art equipment.
- Engineers will work with staff and pupils on exciting learning activities which re-imagine what is possible in a primary school, giving our children hands-on experience of STEAM subjects in action, to enthuse them about innovation, creativity and discovery.



and love... discovering life in all its fullness.



Enlarged grounds will enhance every part of the children's experience at school. We plan:

- Spaces for outdoor learning, gardening and meadows
- A second all weather games area and even a hill fort.
- A second school hall for additional sports lessons, large group learning and performances.



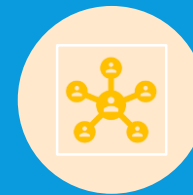
Introducing: Vision 2025-30



Planned School Expansion



STEAM Curriculum



Wellbeing: Personal, Social, Moral, Cultural and Spiritual Development



Sport and extra-curricular activities



Special Educational Needs and Disabilities

VISION 2025-30



Planned School Expansion

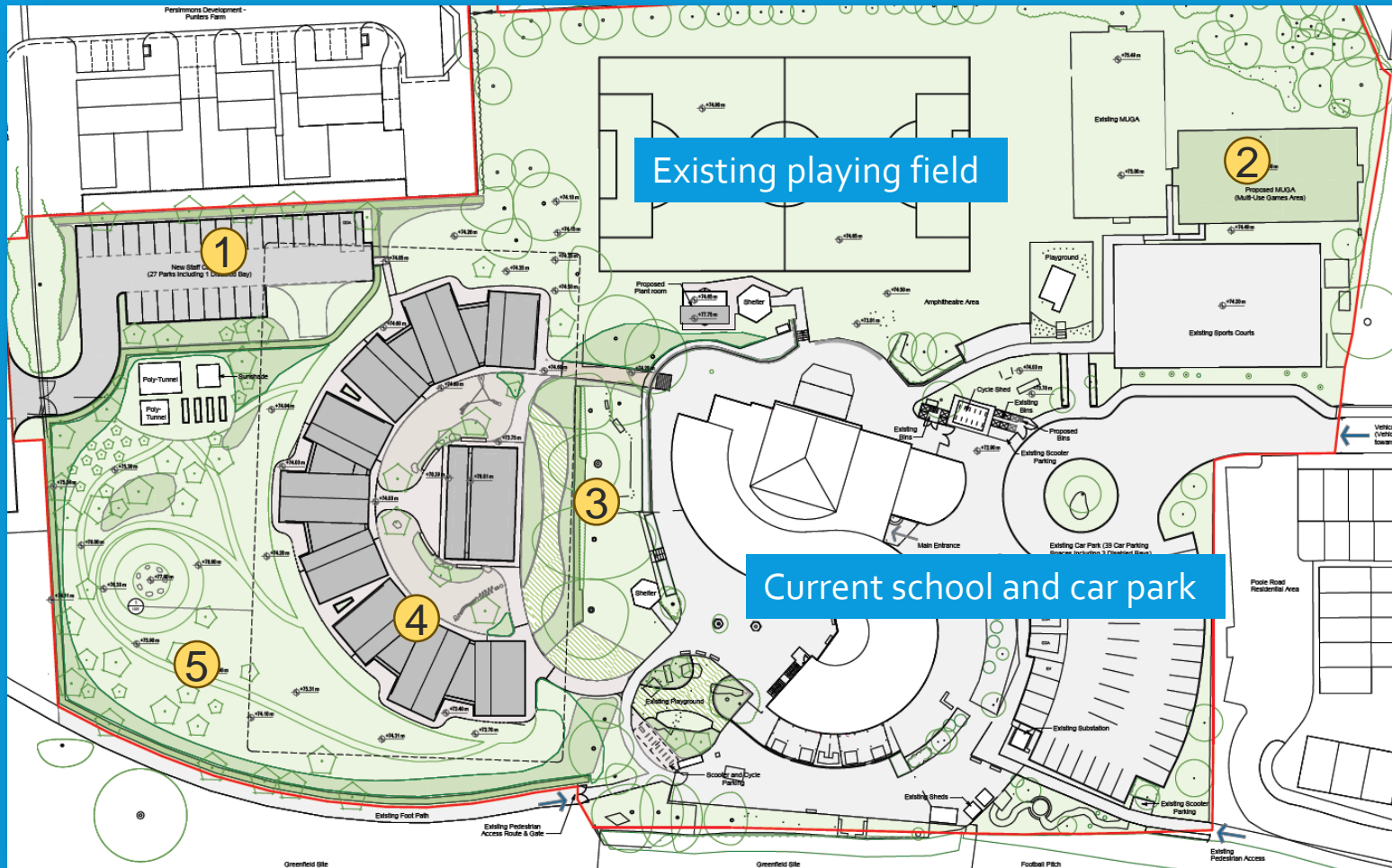
Map of the Expansion

WilkinsonEyre Architects

DANIEL
CONNAL
PARTNERSHIP



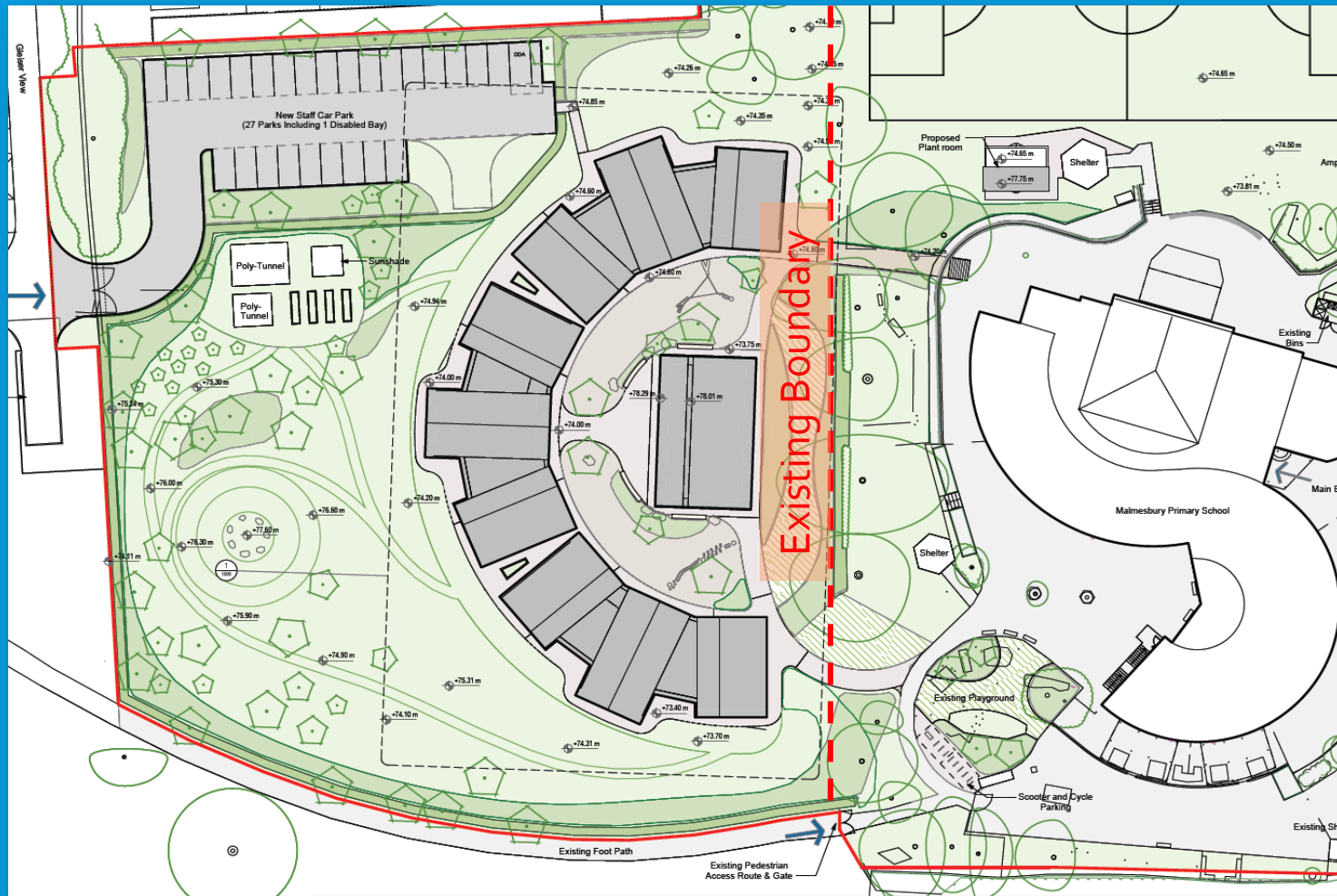
Plans and renders subject to planning permission - plans submitted to Wiltshire Council, created by Wilkinson Eyre Architects and Daniel Connal project managers.



1. Car Park - staff only - freeing up space in the front car park
2. Second MUGA area
3. Central 'Green Heart' area
4. 9x New Classrooms in 3 clusters
5. Landscaping, including hill fort, gardening area and meadow



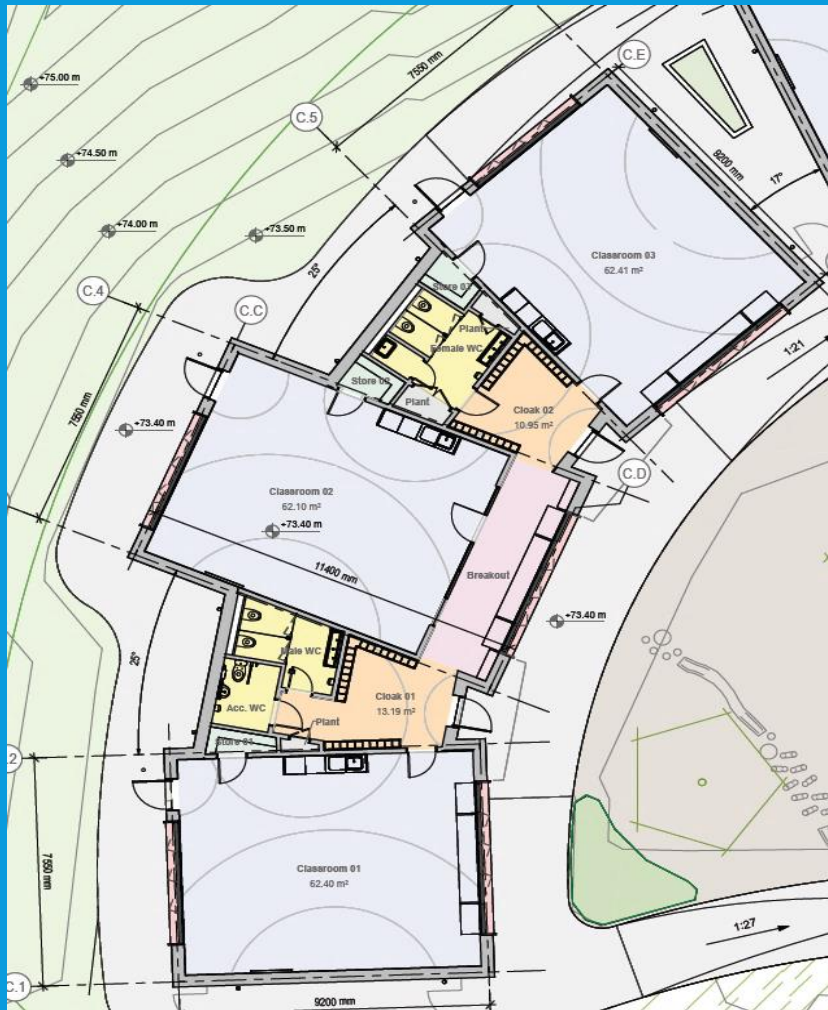
Expansion Plan – West of the site



- Almost all construction will be outside the existing site
- New car park (staff & emergency access only)
- Landscaping and planting with paths through
- Gardening area



Details of the Expansion



Classroom Clusters:

- Large classrooms 62m²
- Shared breakout space
- Boy, girl and disabled toilets
- 2 cloakrooms between 3 classes
- Doors to both sides



New Spaces – Classrooms and Hall



Classrooms are in colour themed clusters of 3, so that year groups have a sense of togetherness. Rooms in the existing building will also be realigned so that year groups are together.

The new hall will be a shared space for assemblies, sports, dining and active learning.



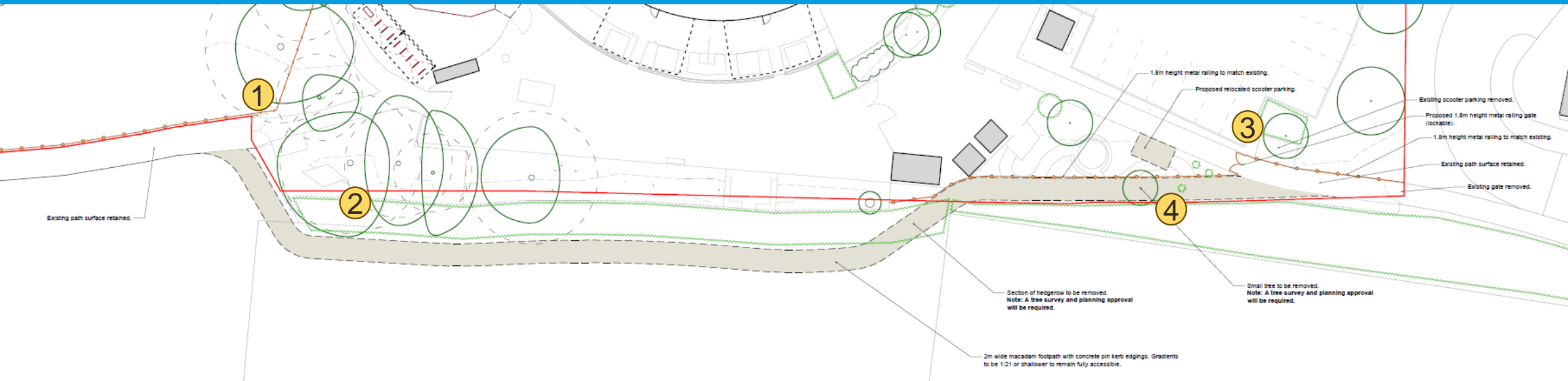
Traffic and Travel Planning



More pupils would create more traffic. A very detailed travel plan has been created and submitted along with the planning submission. There will be:

- More bicycle and scooter parking
- Greater encouragement to children and carers to travel sustainably (70% of us live within 1 mile of the school and 85% within 2 miles)
- A new carpark at the rear of the site - for staff and emergency access only
- A footpath permitted along our southern boundary to connect Backbridge with the town
- And by providing schooling in the town, we will reduce journeys overall

Traffic and Travel Planning



We plan to work with the Town Council to allow the existing footpath from Backbridge to extend along the south of our site, linking up with Poole Road. This will create a way through to the front of the school and to the town.

1. Existing Rear gates
2. School grounds boundary in RED
3. Gate to Poole Road
4. Pass through existing Garden Area

Expansion Timeline



September 2025

Planning application submitted

January 2026

Planning permission granted

July 2026

Building work commences

September 2027

Building opens. Revised school curriculum incorporating changes to the National Curriculum and opportunities created by the development.

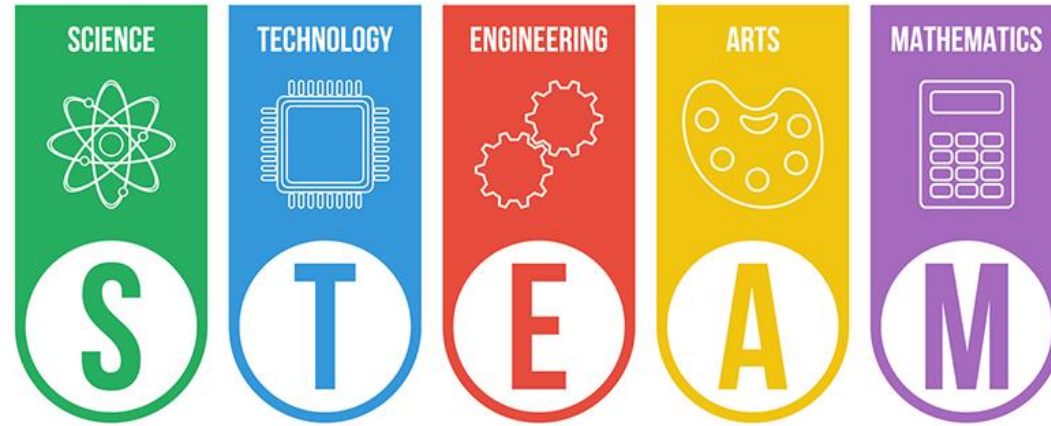
From September 2027 – Pupil numbers grow according to need at a maximum of 1 class per year.

STEAM curriculum development and implementation

Pace of Growth in Pupil Numbers



- Once we have the buildings in place, we can expand as the town grows and the need for places increases. We do not want to grow to the detriment of other local schools but we recognize that people who live in Malmesbury want the option of sending their children to school in Malmesbury
- The normal pace of growth for schools, once there is demand for places, is to add 1 Reception class each year for 7 years. This is our ideal route for growth.
- Current pupil number projections do not show a need for an extra class in September 2027. However, the town is growing and there is a national push for house building.
- For some years to come we will have the luxury of space: buildings designed to accommodate 630 pupils but fewer than that on roll. This will create many opportunities.



EDUCATION

VISION 2025-30

STEAM Curriculum



The STEAM Curriculum - Facilities



The facilities will be made available to children from other schools, either to visit or to use remotely.

The STEAM rooms will be created by refurbishing rooms in the existing building – currently the Media Suite and one of the Year 1 classrooms.



Images from the Dyson STEAM building at Gresham's School.

The STEAM Curriculum - Facilities



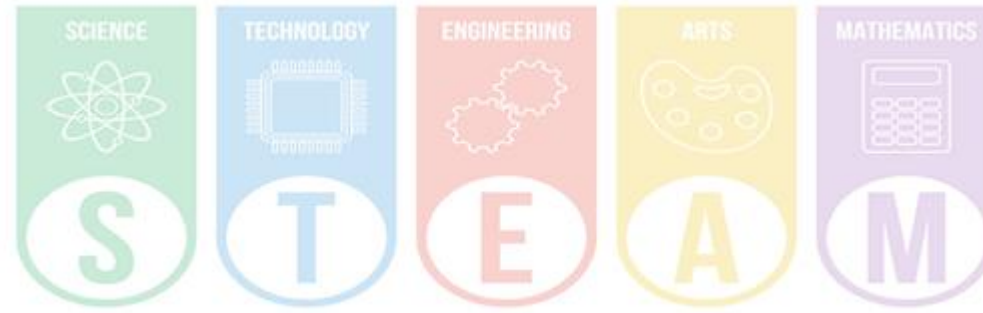
An equipment list has been planned and budgeted, but it will change according to technological developments. It includes:

- Colour 3D printers
- Laser cutter
- Oscilloscopes
- Digital projection microscopes
- CNC router

And a mass of more regular equipment



The STEAM Curriculum



In July 2025 we surveyed all the children in the school to assess their understanding, attitudes and aspirations in relation to STEAM subjects. We have also researched national data. As a result, we are aiming initially at these areas:

- Maintaining children's sense of curiosity and enjoyment as they grow up, embracing increasing complexity and challenge.
- Further develop children's resilience as problem-solvers—framing challenge as rewarding and helping them to see value in persistence and learning from mistakes.
- Sustain and strengthen all pupils' enthusiasm for and engagement with mathematics in the upper primary years.
- To challenge bias in children's perceptions of scientists and mathematicians. This includes gender perceptions, particularly in relation to girls in STEAM subjects. We want everyone to think 'these are subjects for ME'.

THE STEAM CURRICULUM



- We will work in collaboration with the James Dyson Foundation, which is already extensively involved in STEAM education.
- Engineers will work with staff and children to create a curriculum for the future.
- We will go beyond the National Curriculum to devise activities which will teach key concepts while enthusing children through real-world problem solving, innovation and creativity.

JAMES DYSON
FOUNDATION
STEAM WEEK

AND BUILD
PORTER

NON-
NEWTONIAN
FLUID

BALLOON
CARRACE



VISION 2025-30

Wellbeing: Personal, Social, Moral, Cultural
and Spiritual Development

Wellbeing: Personal, social, moral, cultural and spiritual development



Our consultation in April 2025 identified children's personal, social, moral, cultural and spiritual development as a key area of strength, where stakeholders value what we do and want to us continue to do it and do it even better, to ensure that all children are happy, healthy and flourishing.

In particular:

- Nature and Outdoor Learning
- Spiritual Development
- Sporting and Other Extra-Curricular Activities
- Special Educational Needs & Disability (SEND) Provision

Nature and Outdoor Learning



- Children learn both from and in their environment. Our plans for development are concerned with wellbeing, nature and the environment in multiple dimensions:
- The expansion has been carefully planned to enhance the biodiversity of the site by at least 10% and will fully meet exacting BREEAM environmental standards
- The project has been designed around existing high-value trees to create a green heart to the school
- There will be solar panels on the roof of the new hall, heat exchangers will heat all new rooms and the construction will use hemp, a renewable material.



Nature and Outdoor Learning



- The new grounds will be landscaped and planted naturalistically, with native plants, wildflowers and paths, to offer peaceful and relaxing spaces and a new area for outdoor learning
- We will build into our curriculum the learning opportunities which all these new features create, so that more learning takes place outdoors and there is more learning about the environment.



Spiritual Development



We are a Church of England School. Our partnership with Malmesbury Abbey is foundational to all our work.

While we develop the physical facilities, build the skills of engineering, and shape young minds to be citizens of the future, we will also help our children to explore and understand that:

- There is a spiritual aspect to many people's lives
- What this means
- How it is expressed
- Why it is valuable
- What it might mean for them individually



MALMESBURY ABBEY

12th Century Beauty, 21st Century Church

Spiritual Development



How will we develop something so personal and difficult to define?



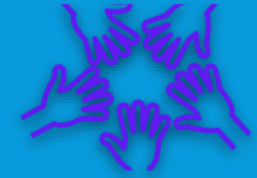
Opportunity: Creating time, space and opportunities for reflection and for creativity – across the curriculum



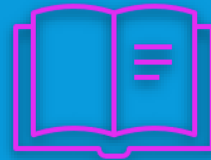
Group: Daily collective worship (assemblies) in varying group sizes



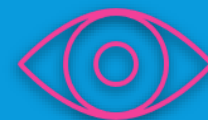
People: Arranging encounters with people of faith



Inclusion: Following the calendar of celebrations in Christianity and other faiths



Education: Teaching children what spirituality is

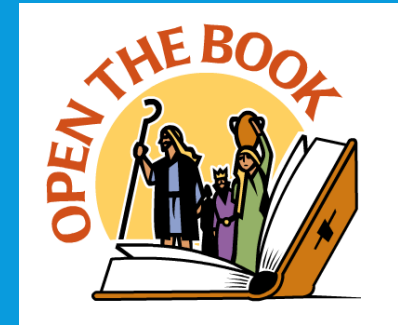


Experience: Living out our vision and values

Initiatives with Malmesbury Abbey



- Open the Book is a programme brought to us by the children's work team at the Abbey. During assemblies, sequences of Bible stories are brought to life by being acted out and their meanings are explored.
- Lifepath is for children in Year 5. Organised and run annually at the Abbey, children spend a day exploring the history of Christianity at the heart of their town, and reflecting on the path that their lives might take.
- Wild Church is a initiative for Year 6 brought to us by Malmesbury Abbey's Youth Worker. Children spend time outside undertaking activities which explore the wonder of nature to experience beauty and spirituality in the natural world.



Sport and Extra Curricular Activities



Our provision is currently restricted by the number of available spaces. Sports facilities have been carefully considered as part of the expansion:

- We plan to build a second MUGA next to the existing one, significantly increasing the available all-weather surface for sports during and after the school day.
- The second hall will also add new space for PE and games lessons and clubs.
- The landscaped new grounds will offer scope for orienteering activities and / or a bike track.



Sport and Extra Curricular Activities



- We will be able to offer more after school clubs, using the STEAM rooms and facilities, and the additional space available before we reach our new capacity of 630.
- We will also have the scope to increase our provision of before and after school childcare. Demand for Peas in the Pod continues to grow and is only limited by the physical space available.



A Pre-School

For a number of years we have wanted to establish a pre-school on the school site. It would:

- Enable us to support the learning of children before they start school
- Ease children's transition into school
- Provide a one-stop service for parents and carers

We anticipate that we will be able to do this once we have the new buildings.

We are exploring options – either working with an existing provider or running a pre-school ourselves. We would want to have a qualified teacher overseeing the provision. We could cater for one class of children or two.





Learning Knows No Bounds

VISION 2025-30

Special Education Needs & Disability Provision

Special Education Needs & Disability Provision



- Malmesbury Primary School rightly enjoys an excellent reputation for our inclusion of pupils with SEND and our success working with them. We regard this as fundamental to our vision and values.
- The expansion will all be on a single level, with excellent access and disabled facilities. STEAM rooms are positioned for easy access and proximity to disabled facilities.
- We were only the second school in Wiltshire to gain the Dyslexia Friendly Schools award. We will maintain and enhance our provision for dyslexia and champion other forms of neurodiversity, noting that a large proportion of the most successful engineers are neurodiverse.



Special Education Needs & Disability Provision



- We will continue to prioritise our mental health provision: a school counsellor, experienced Emotional Literacy Support Assistants, parent support advisor and Senior Mental Health Lead.
- The Government will publish plans for reform of SEND provision in the Autumn of 2025. We will assess and implement the changes to achieve maximum benefit for our pupils.'





This is our vision for 2025-30

We hope you find it inspiring and exciting.

A full planning submission for our expansion has now been made and will shortly be available to view on Wiltshire Council's website.

We welcome your feedback!